



## Bird Spotlight

### Painted Bunting: *Passerina ciris*



Photo: Sean Fitzgerald

#### Size & Shape

This small, brightly colored finch is one of North America's most colorful birds.

#### Field Marks

Males have a red chest, blue head, bright red eyering, and green back. Its wings and tail are gray. Females and juveniles are bright yellow-green all over.

#### Sounds

Song is a melodic high-pitched, thin, sweet warble consisting of short phrases of variable pitch. Their call is a soft rising chip.

#### Habitat

Painted Buntings breed in open brushlands, thickets, and scattered woodland. The nest is a deep, neatly-woven cup of plant fibers, lined with hair or fine grass, usually placed in shrubs.

#### Food

Eat insects, larvae, and spiders in breeding season and seeds in fall and winter

#### Behavior

Forages using various methods, including flying up from ground to grab tall grass stems in its bill, pulling stems to ground, and extracting seeds. They also pick insects from spider webs. Males are highly territorial.

#### Conservation Status

This species is in steady decline and is nearing threatened status. Threats include habitat loss and being captured illegally as cage birds in its wintering grounds. It is a Species of Greatest Conservation Need in Texas.



# Audubon TEXAS

A State Program of the National Audubon Society

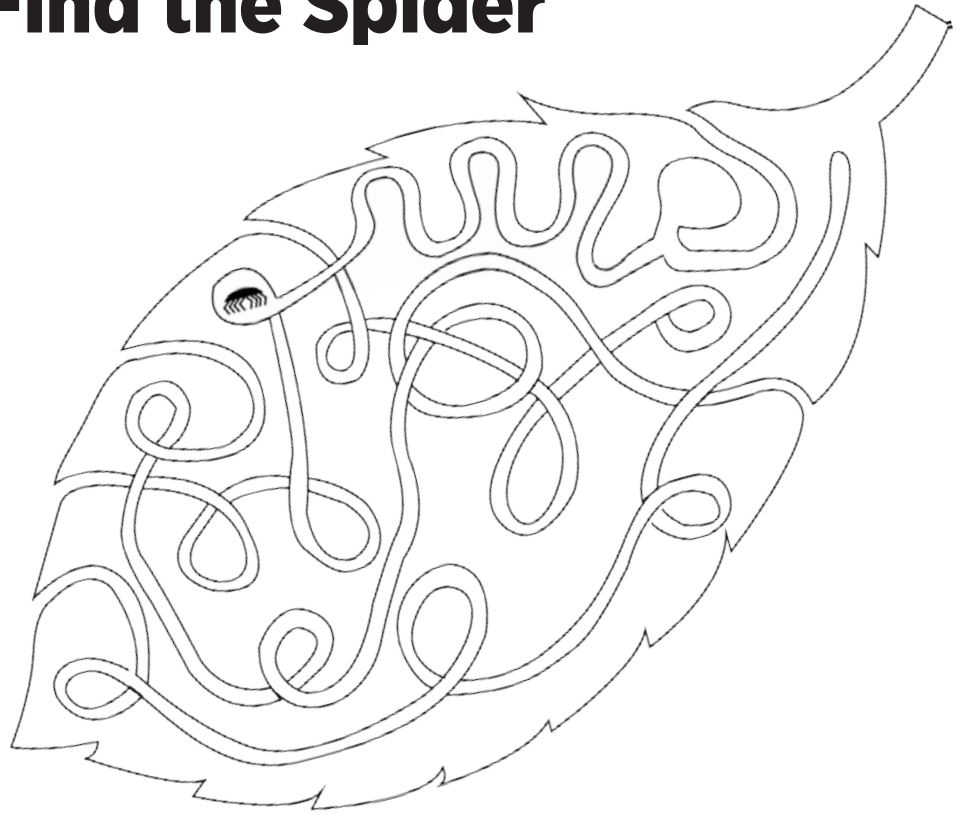
## Lights Out for Migration

Did you know that over 98% of North America's long-distance migratory bird species pass through Texas during the year? Texas is hugely important to migratory birds, many of whom fly for 20 to 30 hours non-stop across the Gulf of Mexico.

Light pollution from our cities and towns can make it harder for birds that migrate at night to find their way. You can help migrating birds by participating in Lights Out during both spring (April-June) and fall (August-November). Turn out unnecessary outdoor lighting or use motion sensors; use downward-facing, shielded lights that put light where people need it; and close blinds and curtains at night to cut down light pollution.

**Learn about how Audubon Texas helps birds during migration: <http://tx.audubon.org/conservation/bird-friendly-buildings>**

## Find the Spider



## Color the Painted Bunting

CHIP...

CHIP...

CHIP



VISIT US ONLINE AT [TX.AUDUBON.ORG](http://TX.AUDUBON.ORG)

